

# MODEL 7929 FIELD CONNECTION DIAGRAM

EXAMPLE: 7929-1-6

CLOSE CONTACT TO STOP TIMER  
AT NEXT "OFF" CYCLE

CLOSE CONTACT TO STOP TIMER  
AT NEXT "ON" CYCLE

-1 = ON TIME RANGE  
(16-600 MILLISECONDS)  
-6 = OFF TIME RANGE  
(1-60 SECONDS)

JUMPER:

- SHIPPED IN 4 OUTPUTS POSITION
- MOVE JUMPER DOWN TO REDUCE # OF OUTPUTS

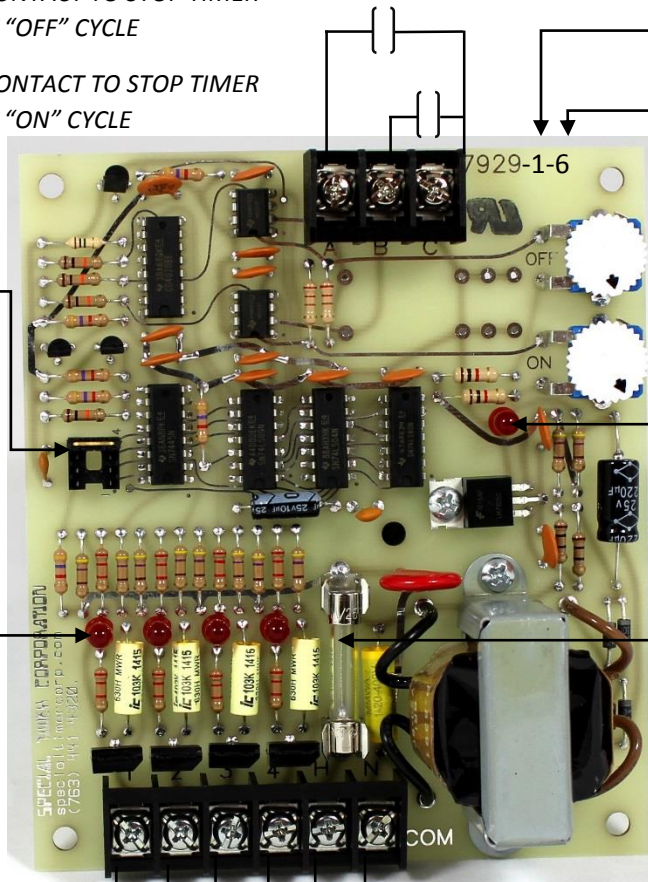
OFF TIME ADJUST

ON TIME ADJUST

POWER LED

OUTPUT INDICATORS

FUSE 1-3 AMP



LOADS: 1-3 AMPS  
(1A FUSE SUPPLIED)

120 VAC  
50/60HZ

ON AND OFF TIME RANGE

SEQUENCE:

- No. 1 ON THEN No. 1 OFF, THEN No. 2 ON THEN No. 2 OFF, AND SO ON TO LAST OUTPUT, THEN BACK TO No. 1 AND CYCLE REPEATS
- ON TIME AND OFF TIME ARE INDEPENDENTLY ADJUSTABLE
- FOR AVAILABLE TIMES SEE TABLE AT RIGHT

SYM	TIME RANGES
1	16 TO 600 MILLISECONDS
2	30 MILLISECONDS TO 1.2 SECONDS
3	.1 TO 6 SECONDS
4	.2 TO 12 SECONDS
5	.3 TO 20 SECONDS
6	1 TO 60 SECONDS
7	2 SECONDS TO 2 MINUTES
8	15 SECONDS TO 10 MINUTES
9	.5 TO 20 MINUTES
10	1 TO 45 MINUTES
11	1 MINUTES TO 1.5 HOURS
12	1 MINUTES TO 8 HOURS